

More than 200 references

Security issues in hospitals are very specific and needs may be contradictory.

As a public place with a high volume of traffic, hospitals must be able to prevent theft or damage to expensive equipment, protect sterile areas or isolate dangerous products.

The surface of buildings, the management of staff and the important flow to optimize are also issues to consider.

Through its hardware and software solutions, TIL TECHNOLOGIES can meet all the needs of healthcare institutions.

TIL ALREADY EQUIPS

HOSPITALS

- La Pitié-Salpêtrière (Paris)
- Henri Mondor (Paris)
- Lariboisière (Paris)
- Hôpital Nord (Marseille)
- La Conception (Marseille)
- St Joseph (Marseille)
- Hospices Civils de Lyon
- Hôpitaux Universitaires de Strasbourg
- Bordeaux
- Rennes
- Nice
- Brest
- Toulouse
- Orléans
- Montreuil
- Aix-en-Provence
- Beauvais
- Perpignan
- Montauban
- Villeneuve-st-Georges
- Carcassonne
- Arles
- Dôle

RESEARCH Centres

- Institut National de Veille Sanitaire - Saint Maurice
- CNRS BIO-RAD - Montpellier
- CNRS - Banyuls-sur-Mer
- Fondation MERIEUX - Lyon
- BIOTRIAL - Rennes
- CEA - Fontenay-aux-Roses
- LILLY - Suresnes
- JOHNSON & JOHNSON - Martillac
- SANOFI AVENTIS - Montpellier, Avignon, Porcheville, Casablanca
- ARKOPHARMA - Carros
- BOIRON - Ste-Foy-Les-Lyon, Les Olmes,

SPECIALIZED INSTITUTIONS

- Bâtiment Psychiatrique La Teppe - Tain l'Hermitage
- UHSA Le vinatier - Lyon
- Unité pour malades difficiles - Albi
- Nombreux EHPAD et MAPAD à travers la France

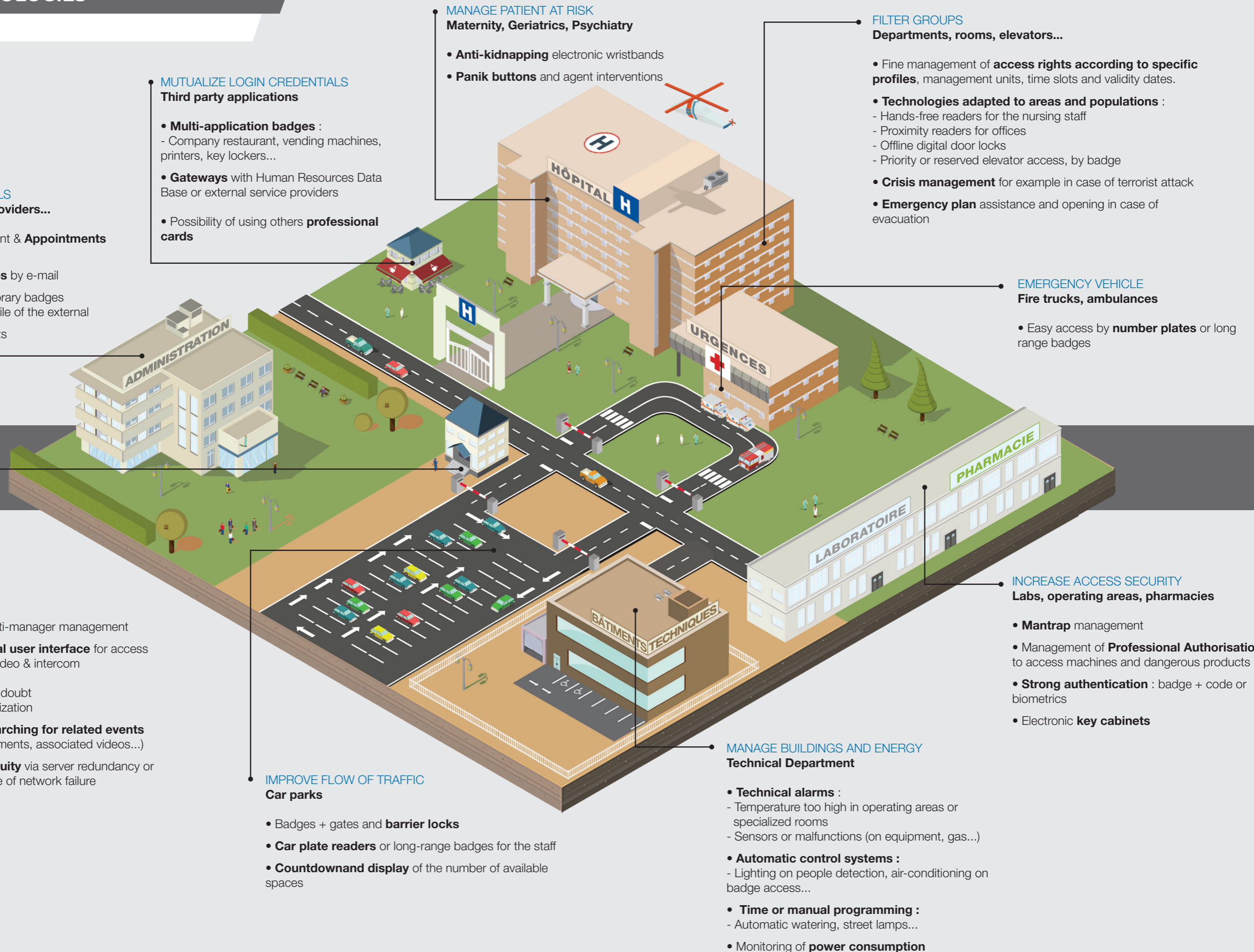
HEALTHCARE & HOSPITALS SECURITY



AGILE SOLUTIONS
FOR EVERY SECTOR



TIL TECHNOLOGIES
ELECTRONIC SECURITY SYSTEMS



MANAGE EXTERNALS

Visitors, service providers...

- Visitors management & **Appointments validation**
- Sending **QR-Codes** by e-mail
- Allocation of temporary badges according to the profile of the external
- Lockers and escorts

MUTUALIZE LOGIN CREDENTIALS

Third party applications

- **Multi-application badges** :
- Company restaurant, vending machines, printers, key lockers...
- **Gateways** with Human Resources Data Base or external service providers
- Possibility of using others **professional cards**

MANAGE PATIENT AT RISK

Maternity, Geriatrics, Psychiatry

- **Anti-kidnapping** electronic wristbands
- **Panik buttons** and agent interventions

FILTER GROUPS

Departments, rooms, elevators...

- Fine management of **access rights according to specific profiles**, management units, time slots and validity dates.
- **Technologies adapted to areas and populations** :
- Hands-free readers for the nursing staff
- Proximity readers for offices
- Offline digital door locks
- Priority or reserved elevator access, by badge
- **Crisis management** for example in case of terrorist attack
- **Emergency plan** assistance and opening in case of evacuation

EMERGENCY VEHICLE

Fire trucks, ambulances

- Easy access by **number plates** or long range badges

MONITOR

Security PC

- **Multi-site** or multi-manager management
- **Unique graphical user interface** for access control, intrusion, video & intercom
- Remote openings
- Removal of visual doubt
- Night-time centralization
- Archiving and **searching for related events** (alarms, staff movements, associated videos...)
- **Business continuity** via server redundancy or offline mode in case of network failure

IMPROVE FLOW OF TRAFFIC

Car parks

- Badges + gates and **barrier locks**
- **Car plate readers** or long-range badges for the staff
- **Countdown display** of the number of available spaces

MANAGE BUILDINGS AND ENERGY

Technical Department

- **Technical alarms** :
- Temperature too high in operating areas or specialized rooms
- Sensors or malfunctions (on equipment, gas...)
- **Automatic control systems** :
- Lighting on people detection, air-conditioning on badge access...
- **Time or manual programming** :
- Automatic watering, street lamps...
- Monitoring of **power consumption**

INCREASE ACCESS SECURITY

Labs, operating areas, pharmacies

- **Mantrap** management
- Management of **Professional Authorisations** to access machines and dangerous products
- **Strong authentication** : badge + code or biometrics
- Electronic **key cabinets**